



**DURBIN SWING CHECK VALVES**  
DURBIN INDUSTRIAL VALVE

Durbin Industrial Valve  
Swing Check Valve Series





## DURBIN SWING CHECK VALVES

**DURBIN INDUSTRIAL VALVE**



### **Features:**

**Valve Type:** Angle Swing Check

**Function:** Backflow prevention

**Action:** Normally Closed

**Actuation:** Gravity

**Pilot Range:** N/A

**Sizes:** ½"-1½" (DN 15 to DN 40)

**Pressure Ratings:** Up to 500 psi (34 bar)

**Temperature Ratings:** -40°F to 450°F (-40°C to 231°C)

**Connection Style:** Threaded (NPT/BSPT)

**Cv:** 45 maximum

**Seat Type:** Hard

**Leakage Rate:** ANSI/FCI 70-2 class IV

**Media:** Most process fluid types; gas, liquids and steam

**Overview:** The Durbin Swing Check Valve (CV) was developed because of the lack of quality and reliability of swing check valves on the market. The materials of construction and the swing arm designs lacked the toughness and durability needed for such a vital part of any piping system. Durbin engineers reviewed some of the leading check valves on the market, exposing many design flaws, and sought to design the Durbin CV to correct the mistakes of other manufacturers.

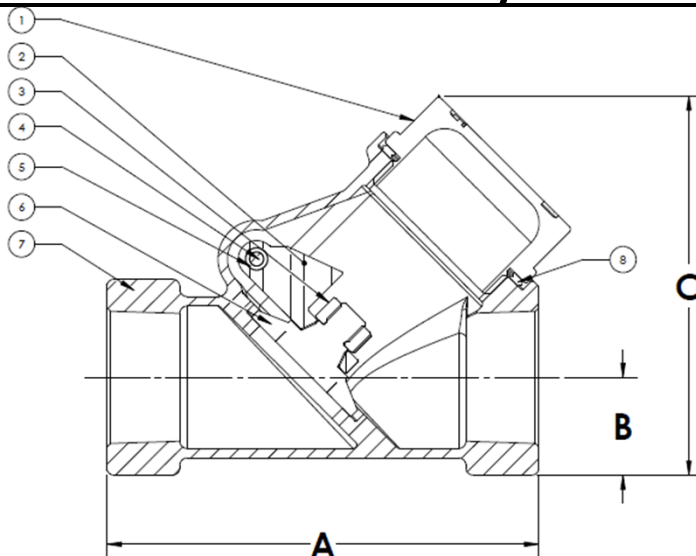
**Materials of Construction:** The Durbin Swing Check valve family's shell and disk are constructed from stainless steel, with heat-treated cast 17-4 PH Stainless used for the swing arm. This incredibly tough and durable material can withstand the brutal forces exerted during a water hammer or other rapid flashing situations. The one piece pin and plug design allows for easy maintenance.

**Design:** The Durbin CV uses a one-piece, completely machined disk to ensure a complete and consistent sealing surface. The body and cap are investment cast to ensure the highest level of casting and machine precision. The swing arm is designed to increase the surface area of impact during a rapid expansion of fluid as well as to relocate the fulcrum point closer to the disk, thereby reducing the chance that the arm will bend upon impact. In addition, the pin rides in a thermoplastic bushing to prevent metal-to-metal wear as the arm pivots.

# **DURBIN SWING CHECK VALVES**

**DURBIN INDUSTRIAL VALVE**

## CV VALVE DIMENSIONS/ PARTS LIST



## CHECK VALVE DIMENSIONS

CHECK VALVE NPT DIMENSIONS						
ITEM		1/2"	3/4"	1"	1-1/4"	1-1/2"
A	IN	2 3/4"	2 3/4"	4 1/4"	4 1/4"	6"
	mm	70	70	108	108	152
B	IN	3/4"	3/4"	1 1/4"	1 1/4"	1 3/8"
	mm	19	19	32	32	35
C	IN	2 3/4"	2 3/4"	4 1/4"	4 1/4"	5"
	mm	70	70	108	108	127
WEIGHT	LBS	4	4	5	5	11
	KG	1.8	1.8	2.3	2.3	4.9

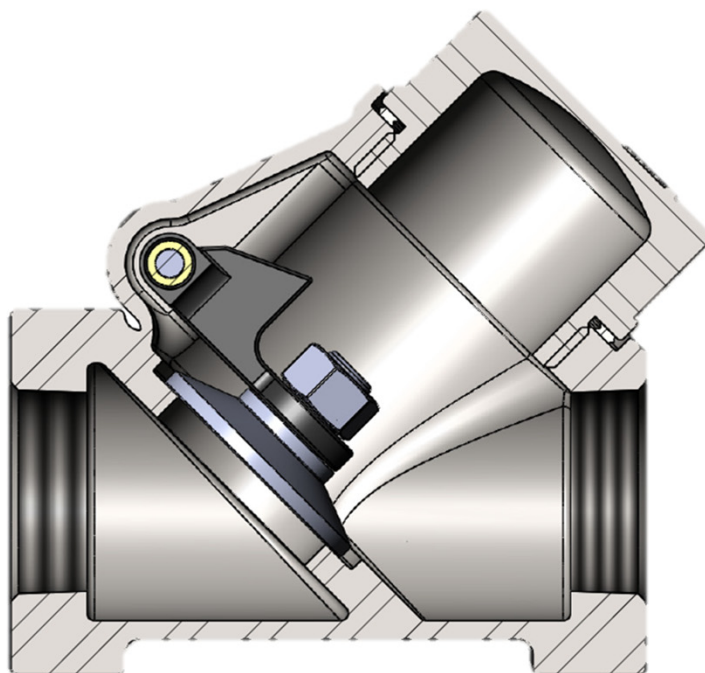
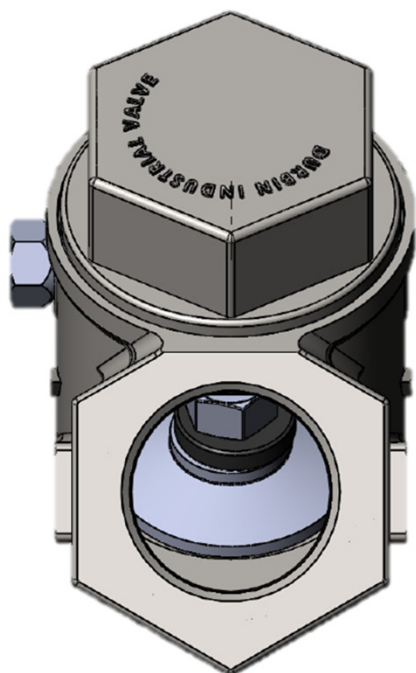
## CHECK VALVE PARTS LIST

SWING CHECK VALVE PARTS LIST						
	VALVE NUMBER	CV10	CV20	CV30	CV40	CV50
	SIZE	1/2"	3/4"	1"	1 1/4"	1 1/2"
	Cv RATING	Cv 12	Cv 18	Cv 28	Cv 30	Cv 45
ITEM	DESCRIPTION	PART #	PART #	PART #	PART #	PART #
1	CAP	CV100-SS	CV100-SS	CV300-SS	CV300-SS	CV500-SS
2	SWINGARM	CV103-SS	CV103-SS	CV303-SS	CV303-SS	CV503-SS
3	NUT	CV104	CV104	CV304	CV304	CV504
4	PIN	CV102	CV102	CV502	CV502	CV502
5	BUSHING	CV101	CV101	CV301	CV301	CV501
6	SEAT DISK	CV105H	CV105H	CV305H	CV305H	CV505H
7	BODY	CV106-SS	CV206-SS	CV306-SS	CV406-SS	CV506-SS
8	GASKET	C343-070D	C383-070D	C383-074D	C383-074D	C383-028D

Please contact us for more information at Phone: 330.724.9968 Email: [valve@durbinvalve.com](mailto:valve@durbinvalve.com) Website: [www.durbinvalve.com](http://www.durbinvalve.com)

# **DURBIN SWING CHECK VALVES**

DURBIN INDUSTRIAL VALVE



## ORDERING INFORMATION

**Example:** CV30N= 1", Check Valve with NPT threaded ports

CV				
	1/2"	10	NPT	N
	3/4"	20	BSP	B
	1"	30		
	1 1/4"	40		
	1 1/2"	50		